

**Size Chart for Adult Preferred Gowns**

SIZE	0	2	4	6	8	10	12	14	16	18	20	22	24	26	28	30	32	34	36	38	40
<b>BUST</b>	28	30	32	34	36	38	40	42	44	46	48	50	52	54	56	58	60	61	64	68	70
<b>WAIST</b>	25	26	29	31	33	36	39	41	43	45	47	49	52	53	54	57	59	61	63	65	66
<b>Max HIP</b>	40	42	44	46	48	50	52	54	56	58	60	61	62	64	64	64	66	68	70	72	74

(Note: the hip of these gowns is full, do not worry unless the measurement goes beyond the scale)

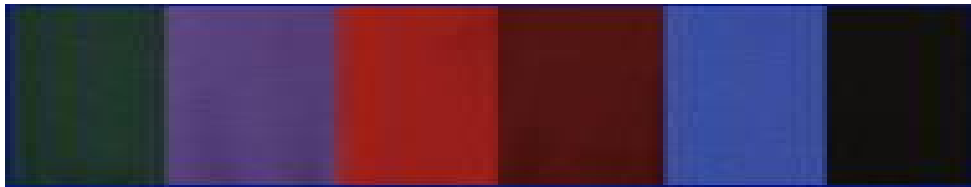
Gown length: Full-length gown: fits up to 5'8", longs, extra longs or special length gowns available on request for an additional cost of \$7.50

**Size Chart for Children's Preferred Gowns**

Size	XS	SM	MED	LG	XL	2XL	3XL
<b>Bust</b>	24	26	28	32	36	39	42
<b>Waist</b>	21	23	26	30	34	38	42
<b>Hip</b>	24	26	28	32	36	39	42
<b>Length, Neck to hem</b>	48	50	52	54	55	56	57
<b>Neck to Waist</b>	12 3/4	13 1/4	14	14 1/2	15	15	15
<b>Maximum Height</b>	4'3"	4'5"	4'7"	4'9"	4'11"	5'1"	5'3'

Longs or special length gowns available on request for an additional cost of \$7.50

**Made-to-Order Preferred Knit Fabric Color Choices**



Black      Purple      Red      Burgundy      Royal      Forest

**Size Chart for Adult Black Microfiber Classical Gowns**

SIZE	0	2	4	6	8	10	12	14	16	18	20	22	24	26	28	30	32	34	36	38	40
<b>BUST</b>	30	32	34	36	38	40	42	44	46	48	50	52	54	55	56	58	60	62	64	66	68
<b>WAIST</b>	22	23	26	28	30	32	34	36	38	40	42	45	47	50	53	55	57	59	61	63	65
<b>Max HIP</b>	28	31	36	38	42	44	46	48	50	52	54	58	60	61	62	63	64	66	68	70	72

(Note: the hip of these gowns is full, do not worry unless the measurement goes beyond the scale)

Gown length: Full-length gown: fits up to 5'8", longs, extra longs or special length gowns available on request for an additional cost of \$7.50

**Size Chart for Children's Black Microfiber Classical Gowns**

Size	XS	SM	MED	LG	XL	2XL	3XL
<b>Bust</b>	21-24	21-24	24-27	28-31	32-35	36-38	40-41
<b>Waist</b>	17-21	17-21	21-25	25-29	30-33	34-37	38-41
<b>Hip</b>	22-25	22-25	26-29	30-33	34-37	38-41	42-45
<b>Length Neck to hem</b>	48	50	52	54	55	56	57
<b>Neck to Waist</b>	12 3/4	13 1/4	14	14 1/2	15	15	15
<b>Maximum Height</b>	4'3"	4'5"	4'7"	4'9"	4'11"	5'1"	5'3'

Longs or special length gowns available on request for an additional cost of \$7.50